

SUPPLEMENT TO THE AGENDA FOR

Health and Wellbeing Board

Tuesday 22 October 2013

3.00 pm

Council Chamber - Brockington

	Pages
6. THE HEALTH AND WELLBEING STRATEGY - MAKING IT REAL	3 - 20
To receive a presentation on the Health and Wellbeing Strategy – Making it Real:	
<ul style="list-style-type: none">• Staying Healthy• Community and Volunteers• Integrated Working• Think Family	



THE HEALTH AND WELLBEING STRATEGY - MAKING IT REAL

Herefordshire Health and Wellbeing Board
22 October 2013

Marmot Framework

- Give every child the best start in life
- Enable all children, young people and adults to maximise their capabilities and have control over their lives
- Create fair employment and good work for all
- Ensure a healthy standard of living for all
- Create and develop healthy and sustainable places and communities
- Strengthen the role and impact of ill health promotion
- **Ensure people receive the care and support they need across the life course**

Health through the life course



HWB Priorities

- Staying Healthy
- Integrated services and pathways
- Communities and volunteering
- Think Family

Staying healthy- the Multi-agency Alcohol Steering Group



Total Crime
01/04/2013 – 31/08/2013
3739



15% of all crime in Herefordshire is
Alcohol Related



56% of Alcohol Related Crime is Violent Crime



75% of all night time economy violent crime
with injury
has alcohol as a factor



775 Street Pastor Interventions



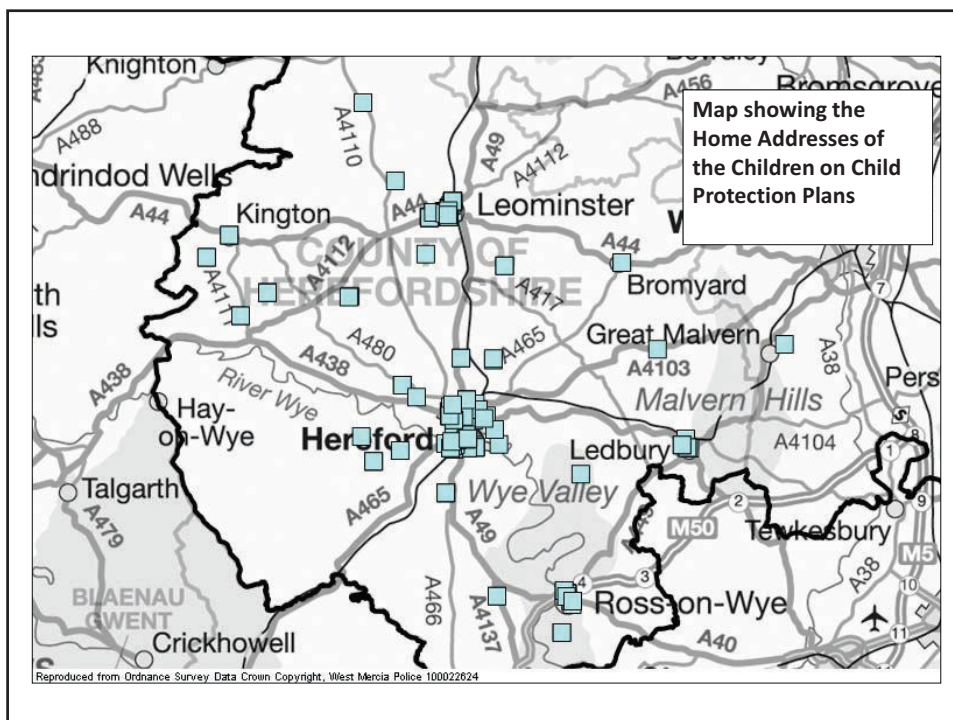
30% of all Domestic Abuse Crime has Alcohol as a factor

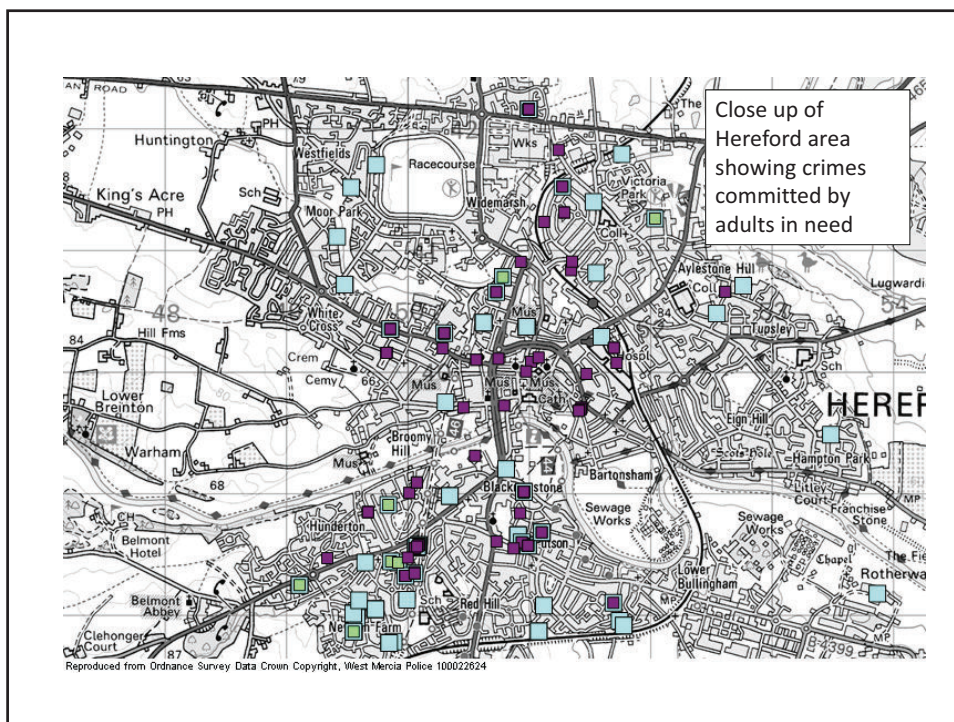
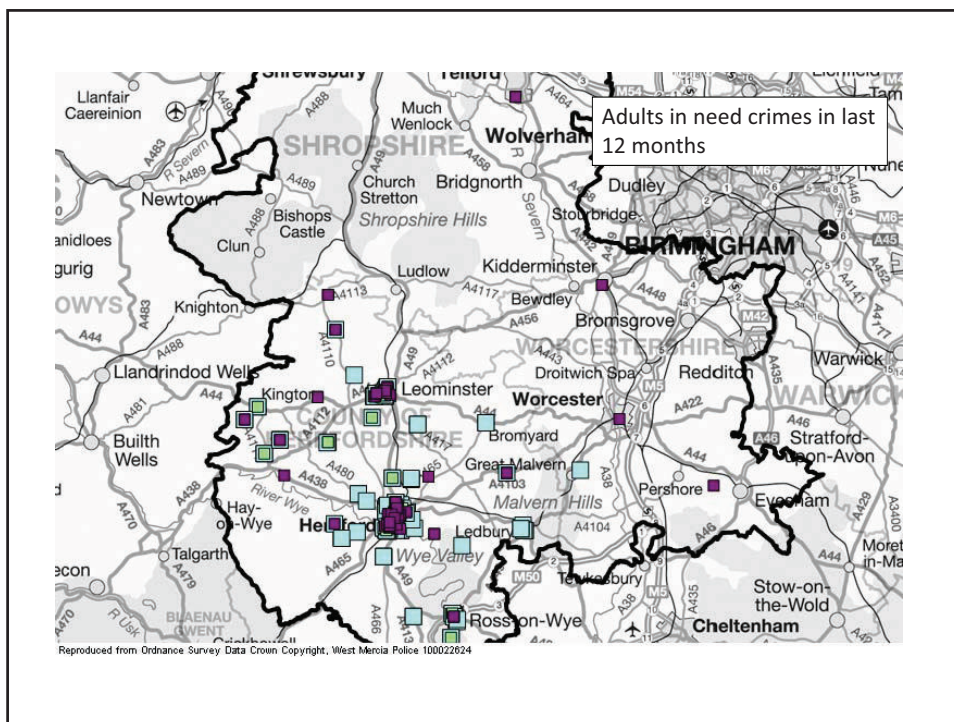


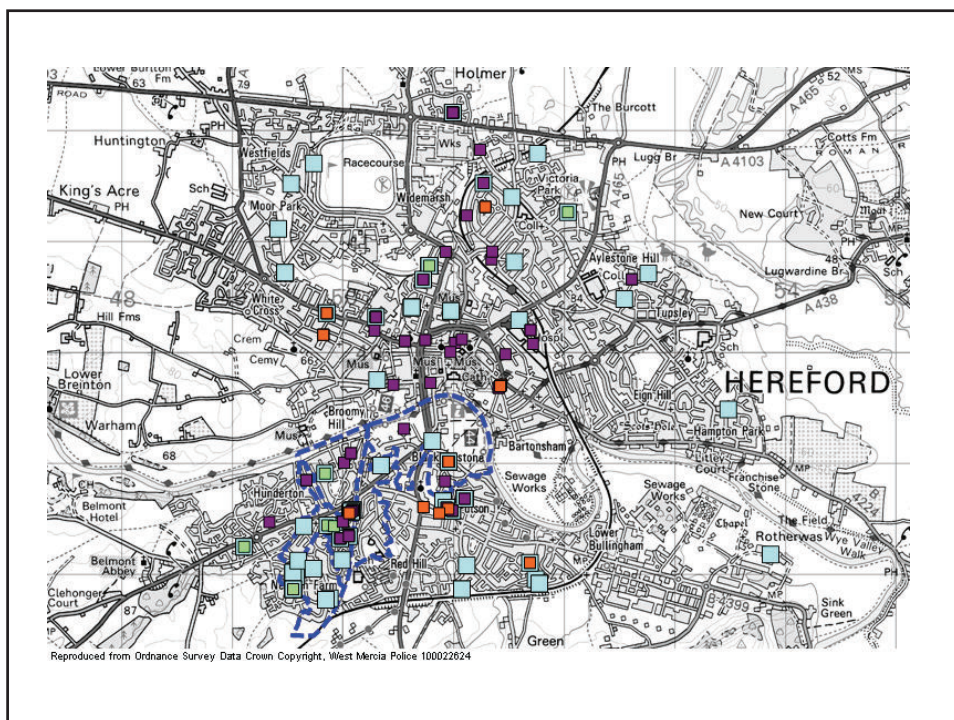
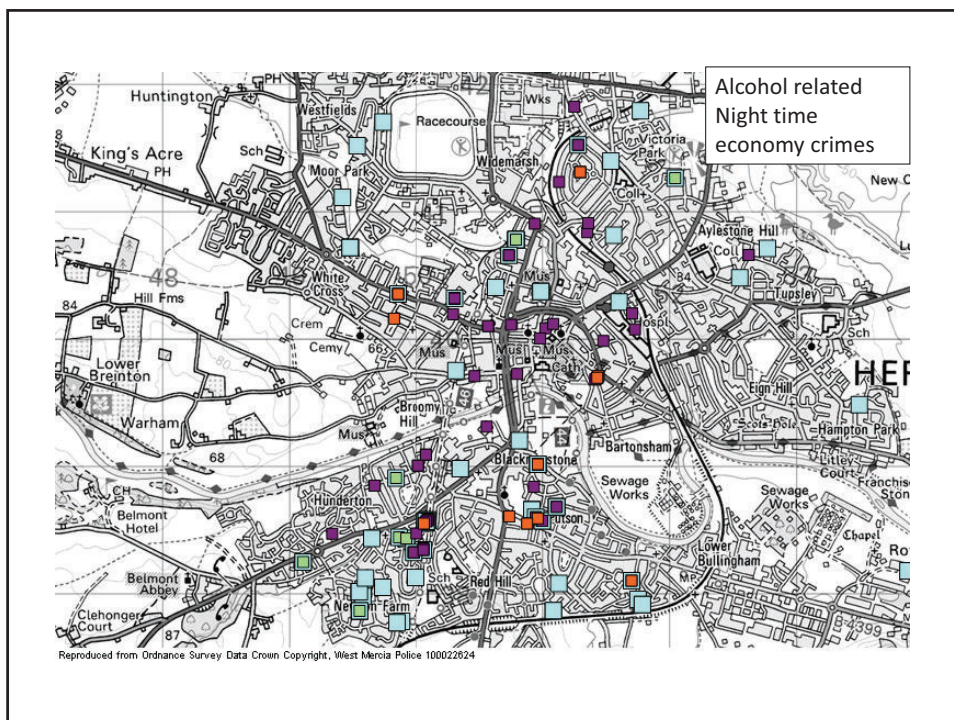
Domestic Abuse is a factor in 42% of the troubled families cohort



50% of children on CP plans are there because of Domestic Abuse



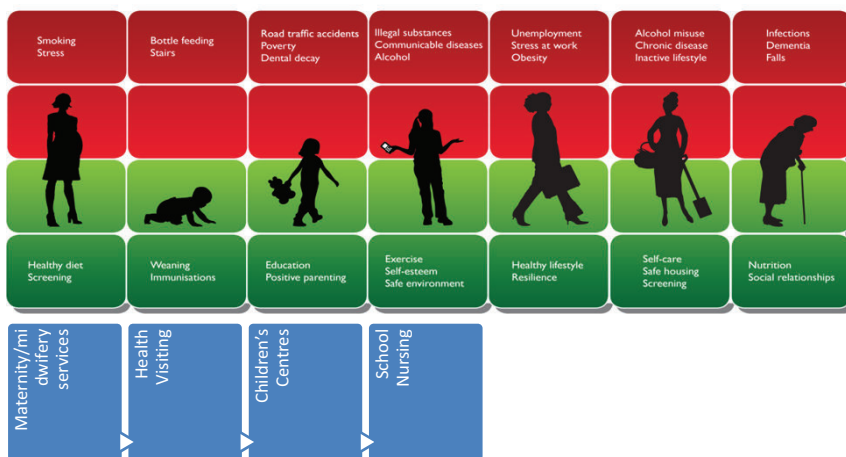




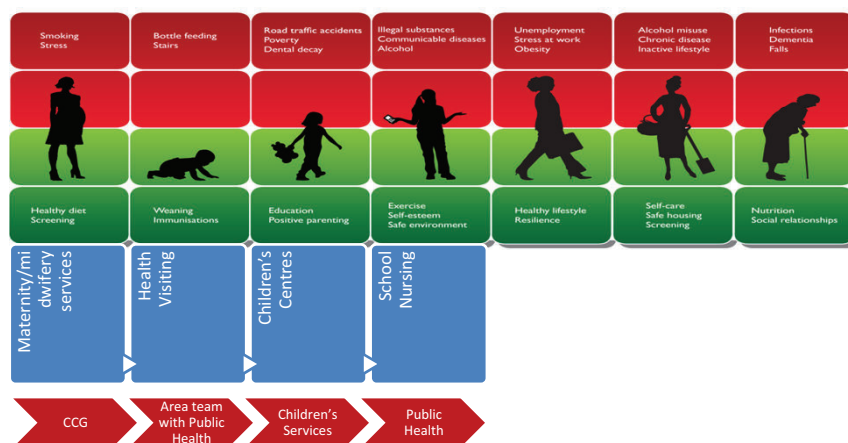
Integrated services and pathways

Child-facing frontline health services

Child-facing frontline health services



Commissioners working together



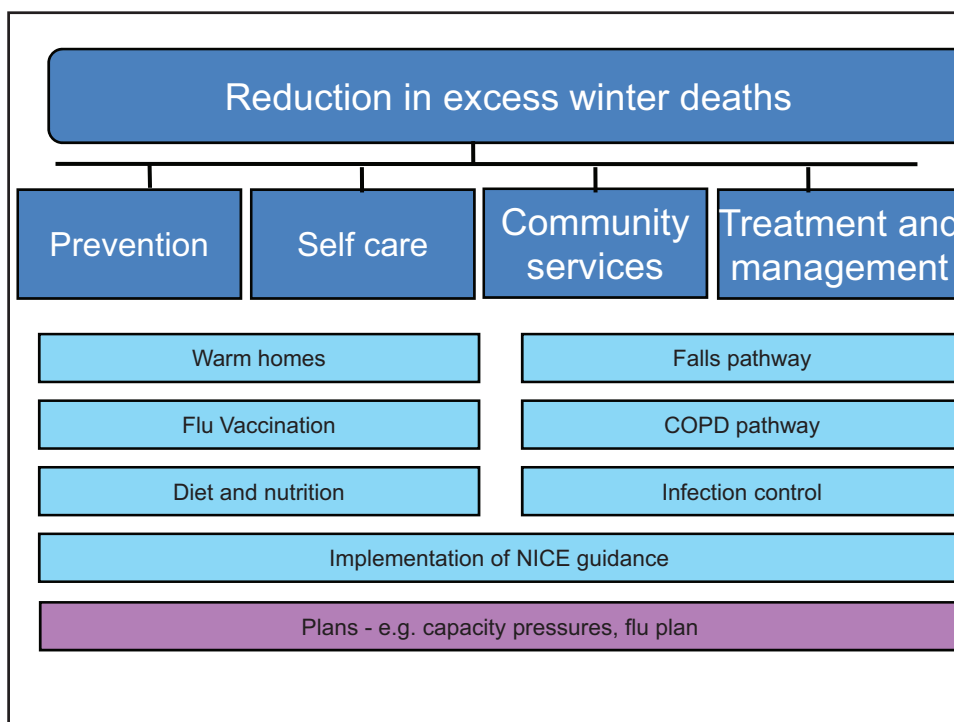
Commissioning for outcomes model

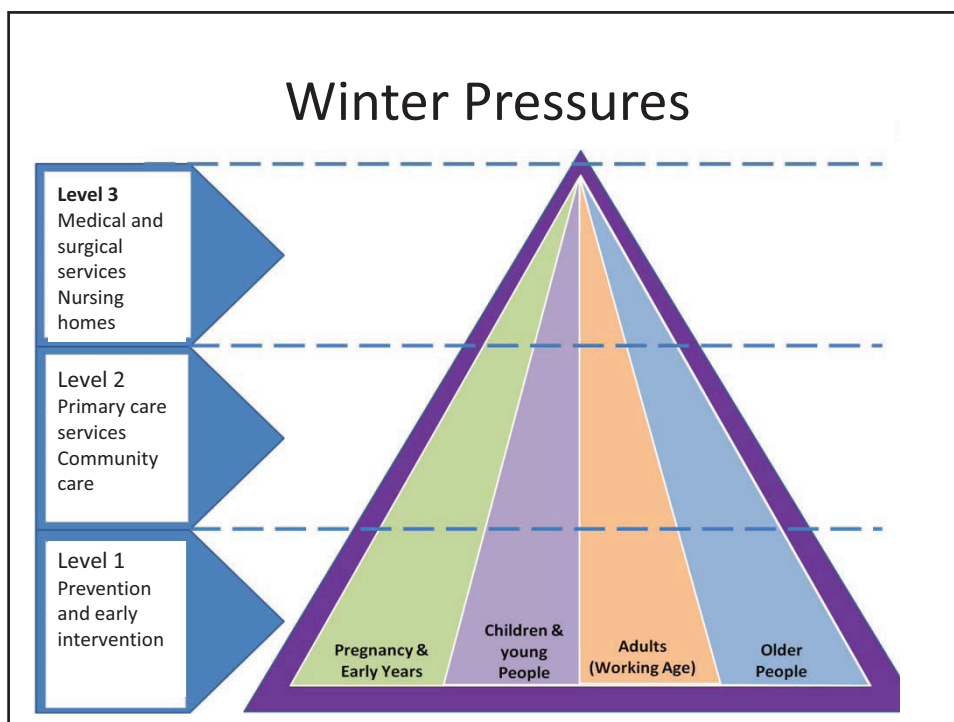
- Step A Assess needs and identify strategic aim
- Step B Search the evidence
- Step C Critique the evidence and review current practice
- Step D Develop the outcomes
- Step E Evaluation framework
- Step F Agree data collection

Next steps – Procurement process

Urgent Care Responses

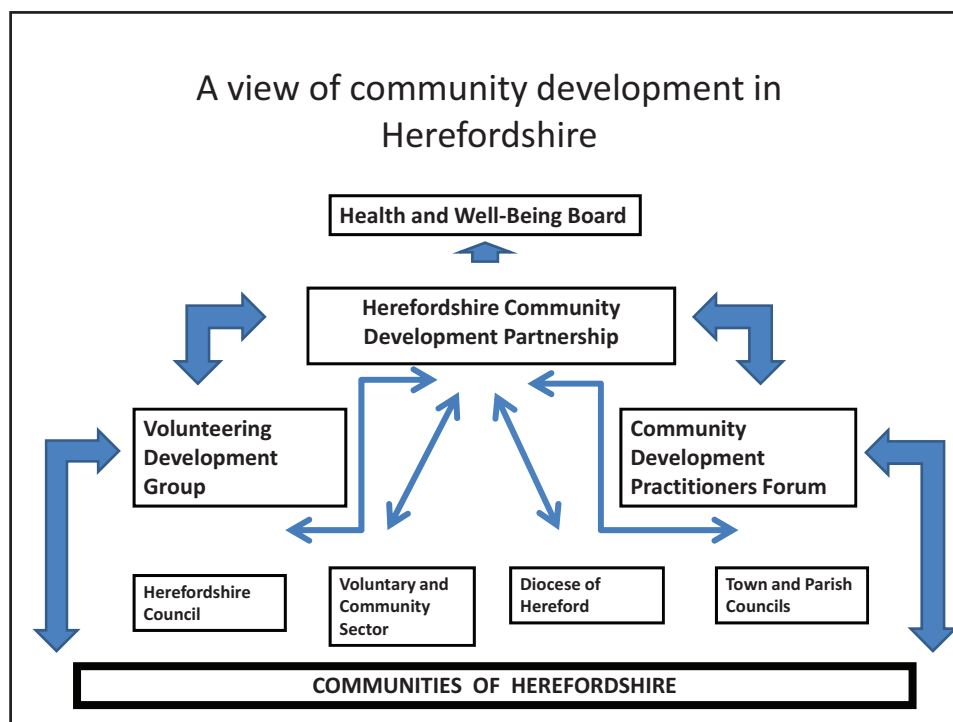
- Urgent Care Board
- Increasing flu immunisation amongst key staff
- Clinical Assessment Unit and Social Care 7 day week
- Rapid Response
- Warm Homes
- Increased Handyman Service
- Use of Carer Support





Communities and Volunteering Recommendations

- Describe some of the current community development arrangements and groups
- Link broader community developments into the health and well being agenda and offering an opportunity to influence statutory organisations commissioning plans and intentions through a voice into the HWB
- Developing a Programme of Action, event 20th Nov 13 led by Cllr Powell which would engage existing and new community development
- And volunteering activity in developing a connected programme with HWB focus.



Membership

Herefordshire Community Development Partnership:

- Community Led Planning Steering Group – reps from HC and Community First
- Localities Steering Group – 2 reps from HC
- Volunteering Development Group – 1 rep, chair
- Community Development Practitioners Forum – 1 rep, hoping to expand this to 4 or 5 from local VCS organisations
- Herefordshire Association of Local Councils – 1 rep
- Herefordshire Voluntary Organisations Support Service (HVOSS) – 1 rep
- Health and Well-Being Board – 1 rep
- Herefordshire Third Sector Board – 1 rep
- Community Cohesion – 1 rep

Community Development Practitioners Forum:

- Large distribution list of frontline VCS organisations, town and parish councils, interested HC commissioners as well as HC DP members
- Intended to be open to all who want to contribute

Volunteering Development Group:

- Distribution list currently stands at around 30 covering organisations involved in supporting and developing volunteering in the county. These include HC, Wye Valley Trust, County Hospital, Nature Trust, Age UK, SHYPP, Halo, RNC and the volunteer centre in Ledbury as well as HVOSS.

NB – all these groups are facilitated by Herefordshire Council's Sustainable Communities Team, whilst remaining cross-sector partnerships with a focus on communities and volunteering.

Think Family

- Three areas of focus proposed:
 - Strengthening Families – 310 families requiring the most input from a number of agencies. New approaches to reduce demand and meet needs
 - Implementation of the Children and Families Bill – biggest shake up to disabilities and SEN for 30 years
 - Remodelling/refinancing early help and specialised safeguarding services

Why?

- Quality
- Outcomes
- Need
- Sustainability
- Transformation needed

Oversight and roles

- HWBB
 - System leadership and top level Children’s Trust
- Children’s Partnership
 - Operational driver
- Safeguarding Board
 - Multi-agency safeguarding cooperation and practice effectiveness
- Education Partnership
 - Educational outcomes for vulnerable groups of children

